

PLASTIC ENCLOSURE

Plastic Enclosure - Plastic Screw - with Rubber Grommets - TB Series - Grey Door & Clear Door

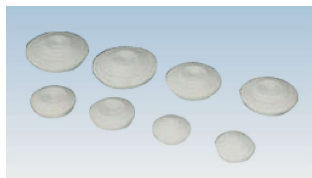
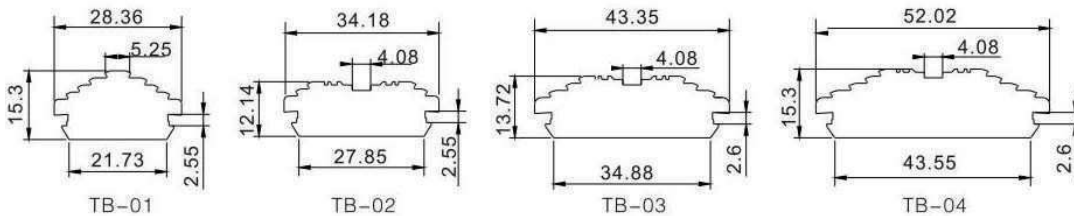
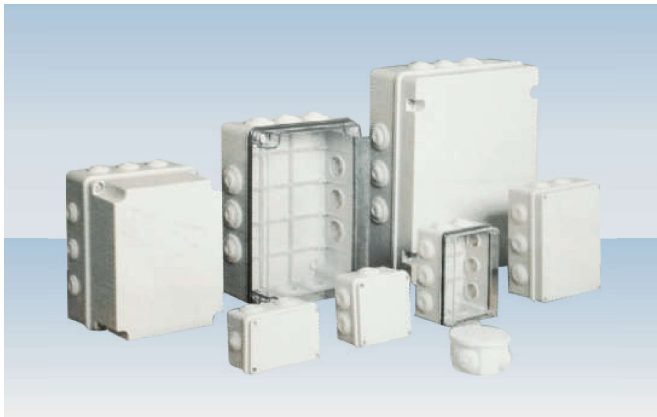
AIBOX non-metallic enclosures are corrosion proof and can use for many applications where non-metallic enclosures are required

Weight of non-metallic enclosures is 25% of the weight of steel enclosures and can use for similar applications where non-metallic enclosures are preferred. Non-metallic enclosures are having good insulation properties and light weight and give advantages over steel enclosures in some applications.

Plastic Enclosure - Plastic screw - with Rubber Grommets - TB series - Grey Door & Clear Door comes with plastic screws and available in grey solid door or transparent door

Inbuilt rubber grommets facilitates cable in and out with required IP ratings

Plastic Screw Type + knock out type		Dimension (mm)		Mounting Plate	Installation size (mm)		
Grey door	Clear door	W X H X XD	D1 + D2	Metal	W3	H3	Holes
TB-AG-C60R	TB-AT-C60R	∅ 60 X 45	-	-	-	-	4
TB-AG-C70R	TB-AT-C70R	∅ 70 X 48	-	-	-	-	4
TB-AG-0606R	TB-AT-0606R	75 X 75 X 45	41.7 + 10	-	-	-	7
TB-AG-0808R	TB-AT-0808R	89 X 89 X 50	46.5 + 10	-	-	-	7
TB-AG-0812R	TB-AT-0812R	80 X 120 X 54	43 + 14	TJ-0812	88	88	6
TB-AG-1010R	TB-AT-1010R	100 X 100 X 54	43 + 14	TJ-1010	68	108	6
TB-AG-1115R	TB-AT-1115R	110 X 150 X 72	52 + 25	TJ-1115	98	137	10
TB-AG-1419R	TB-AT-1419R	140 X 190 X 76	54 + 25	TJ-1419	128	177	10
TB-AG-1924R	TB-AT-1924R	190 X 240 X 95	70 + 25	TJ-1924	170	226	12
TB-AG-1924 - 1R	TB-AT-1924 - 1R	190 X 240 X 165	70 + 96	TJ-1924	170	226	12
TB-AG-2230R	TB-AT-2230R	220 X 300 X 125	76 + 50	TJ-2230	200	280	12
TB-AG-2230 - 1R	TB-AT-2230 - 1R	220 X 300 X 185	76 + 96	TJ-2230	200	280	12
TB-AG-3038R	TB-AT-3038R	300 X 380 X 125	78 + 50	TJ-3038	281	278	12
TB-AG-3038R - 1R	TB-AT-3038R - 1R	300 X 380 X 185	78 + 110	TJ-1038	281	278	12



rubber sealing