

PLASTIC ENCLOSURE

Plastic Enclosure - with Steel Hinge & Latch - TG Series - Grey Door & Clear Door

AIBOX non-metallic enclosures are corrosion proof and can use for many applications where non-metallic enclosures are required

Weight of non-metallic enclosures is 25% of the weight of steel enclosures and can use for similar applications where non-metallic enclosures are preferred. Non-metallic enclosures are having good insulation properties and light weight and give advantages over steel enclosures in some applications.

Plastic Enclosure - with Steel Hinge & Latch - TG series - Grey Door & Clear Door, comes with steel hinge & steel latch and available in grey solid door or transparent door

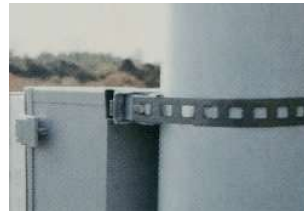
| Plastic latch + hinge type | | Dimension (mm) | | Mounting Plate | | Installation size (mm) | |
|----------------------------|---------------|-----------------|----------|----------------|---------|------------------------|-----|
| Grey door | Clear door | W X H X XD | D1 + D2 | Plastic | Metal | W3 | H3 |
| TJ-MG-2227T | TJ-MT-2227T | 225 X 275 X 120 | 100 + 20 | - | TJ-2227 | 238 | 188 |
| TJ-MG-2030-ST | TJ-MT-2030-ST | 200 X 300 X 150 | 120+ 30 | TJ-2030P | TJ-2030 | 268 | 168 |
| TJ-MG-2030T | TJ-MT-2030T | 200 X 300 X 180 | 130 + 50 | TJ-2030P | TJ-2030 | 270 | 170 |
| TJ-MG-3030T | TJ-MT-3030T | 300 X 300 X 180 | 130 + 50 | TJ-3030P | TJ-3030 | 270 | 270 |
| TJ-MG-3040T | TJ-MT-3040T | 300 X 400 X 180 | 130 + 50 | TJ-3040P | TJ-3040 | 370 | 270 |
| TJ-MG-3040-1T | TJ-MT-3040-1T | 300 X 400 X 210 | 160 + 50 | TJ-3040P | TJ-3040 | 370 | 270 |
| TJ-MG-4050T | TJ-MT-4050T | 400 X 500 X 200 | 150 + 50 | TJ-4050P | TJ-4050 | 470 | 270 |
| TJ-MG-4060T | TJ-MT-4060T | 400 X 600 X 220 | 170 + 50 | TJ-3040PX2 | TJ-4060 | 570 | 370 |



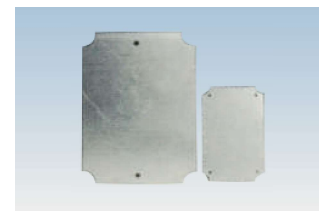
Hoop(telegraph pole fixing)
MODEL: BG 080



Fixed on the telegraph pole



Fixed on the telegraph pole



Steel mounting plate



Plastic mounting plate



Wall Brackets for big plastic box
MODEL: MG



Stainless steel hinge
MODEL: HG-02



Stainless steel latch
MODEL: LC-02



Plastic hinge for box MG,KG
MODEL: PH-01



Plastic hinge for box MG
MODEL: PL-01

PLASTIC ENCLOSURE

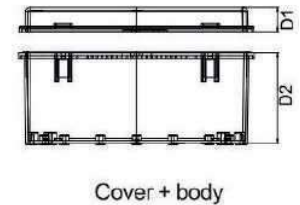
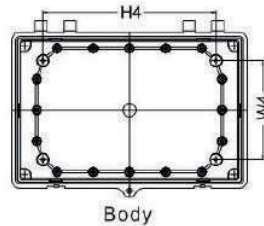
Plastic Enclosure - with Steel Hinge & Latch - TE Series - Grey Door & Clear Door

AIBOX non-metallic enclosures are corrosion proof and can use for many applications where non-metallic enclosures are required

Weight of non-metallic enclosures is 25% of the weight of steel enclosures and can use for similar applications where non-metallic enclosures are preferred. Non-metallic enclosures are having good insulation properties and light weight and give advantages over steel enclosures in some applications.

Plastic Enclosure - with Steel Hinge & Latch - TE series - Grey Door & Clear Door comes with steel hinge & steel latch and available in grey solid door or transparent door

| Metal latch + hinge type | | Dimension (mm) | | Mounting Plate |
|--------------------------|--------------|-----------------|----------|----------------|
| Grey door | Clear door | W X H X D | D1 + D2 | Metal |
| TE-AG-5363-S | TE-AT-5363-S | 530 X 630 X 185 | 150 + 35 | TJ-5363 |
| TE-AG-5363 | TE-AT-5363 | 530 X 630 X 255 | 220+ 35 | TJ-5363 |
| TE-AG-5373-S | TE-AT-5373-S | 530 X 730 X 185 | 150 + 35 | TJ-5373 |
| TE-AG-5373 | TE-AT-5373 | 530 X 730 X 255 | 220 + 35 | TJ-5373 |
| TE-AG-6383-S | TE-AT-6383-S | 630 X 830 X 185 | 150 + 35 | TJ-6383 |
| TE-AG-6383 | TE-AT-6383 | 630 X 830 X 285 | 220 + 35 | TJ-6383 |



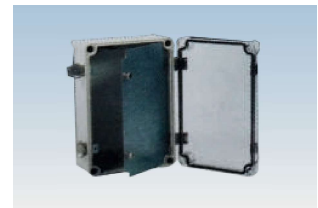
Metall latch



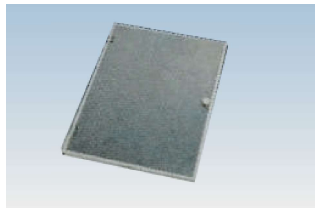
hinge



wall brackets model: WP-02



for box
 TE-2530A TE-2530B TE-2535A
 TE-2535B TE-1929A TE-2939A
 TE-2939B TE-3030A TE-3030B
 TE-3346A TE-3546A



Material: 2mm thickness
 Aluminum inner door or
 galvanized plate 1.5mm



Plastic frame for inner door