

PLASTIC ENCLOSURE - PLASTIC SCREW

Plastic Enclosure - Plastic screw - TJ series - Grey Door & Clear Door

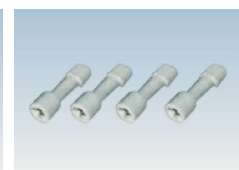
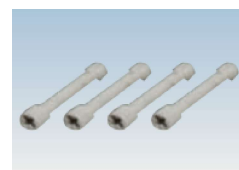
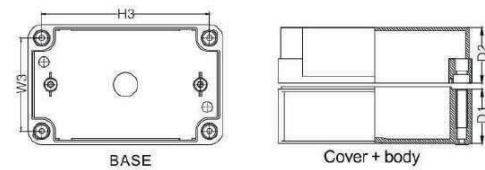
AIBOX non-metallic enclosures are corrosion proof and can use for many applications where non-metallic enclosures are required

Weight of non-metallic enclosures is 25% of the weight of steel enclosures and can use for similar applications where non-metallic enclosures are preferred. Non-metallic enclosures are having good insulation properties and light weight and give advantages over steel enclosures in some applications.

Plastic Enclosure - Plastic screw - TJ series - Grey Door & Clear Door comes with plastic screws and available in grey solid door or transparent door

Temperature range : -40°C to 120°C
 ABS : Acrulonitrile Butadiene styrene
 PC: Poly Carbonate

Screw Type		Dimension (mm)		Mounting Plate		Installation size (mm)	
Grey door	Clear door	W X H X XD	D1 + D2	Plastic	Metal	W3	H3
TJ-AG-0609	TJ-AT-0609	65 X 95 X 55	40 + 15	-	-	50	79
TJ-AG-0710	TJ-AT-0710	75 X 105 X 60	40 + 20	-	TJ-0710	57	86
TJ-AG-0712	TJ-AT-0712	75 X 125 X 75	49 + 25	TJ-0712P	TJ-0712	57	107
TJ-AG-0712 - 1	TJ-AT-0712 - 1	75 X 125 X 100	49 + 50	TJ-0712P	TJ-0712	57	107
TJ-AG-0808	TJ-AT-0808	80 X 80 X 60	45 + 15	TJ-0808P	TJ-0808	62	62
TJ-AG-0808 - 1	TJ-AT-0808 - 1	80 X 80 X 85	70 + 15	TJ-0808P	TJ-0808	62	62
TJ-AG-0811 - S	TJ-AT-0811 - S	80 X 110 X 45	25 + 20	TJ-0811P	TJ-0811	62	92
TJ-AG-0811 - 1S	TJ-AT-0811 - 1S	80 X 110 X 65	25 + 35	TJ-0811P	TJ-0811	62	92
TJ-AG-0811	TJ-AT-0811	80 X 110 X 70	50 + 20	TJ-0811P	TJ-0811	62	92
TJ-AG-0811 - 1	TJ-AT-0811 - 1	80 X 110 X 85	50 + 35	TJ-0811P	TJ-0811	62	92
TJ-AG-0811 - 2	TJ-AT-0811 - 2	80 X 110 X 100	80 + 20	TJ-0811P	TJ-0811	62	92
TJ-AG-0811 - 3	TJ-AT-0811 - 3	80 X 110 X 115	80 + 35	TJ-0811P	TJ-0811	62	92
TJ-AG-0813	TJ-AT-0813	80 X 130 X 70	50 + 20	TJ-0813P	TJ-0813	62	112
TJ-AG-0813 - 1	TJ-AT-0813 - 1	80 X 130 X 85	50 + 35	TJ-0813P	TJ-0813	62	112
TJ-AG-0818	TJ-AT-0818	80 X 180 X 70	50 + 20	TJ-0818P	TJ-0818	62	162
TJ-AG-0818 - 1	TJ-AT-0818 - 1	80 X 180 X 85	50 + 35	TJ-0818P	TJ-0818	62	162
TJ-AG-0822	TJ-AT-0822	80 X 220 X 70	50 + 20	-	TJ-0822	62	202
TJ-AG-0825	TJ-AT-0825	80 X 250 X 70	50 + 20	TJ-0825P	TJ-0825	62	232
TJ-AG-0825 - 1	TJ-AT-0825 - 1	80 X 250 X 85	50 + 35	TJ-0825P	TJ-0825	62	232
TJ-AG-0825 - 2	TJ-AT-0825 - 2	80 X 250 X 100	50 + 50	TJ-0825P	TJ-0825	62	232
TJ-AG-0913	TJ-AT-0913	94 X 130 X 70	50 + 20	-	TJ-0913	74	115
TJ-AG-0913 - 1	TJ-AT-0913 - 1	94 X 130 X 100	80 + 20	-	TJ-0913	74	115
TJ-AG-1010	TJ-AT-1010	100 X 100 X 75	55 + 20	TJ-1010P	TJ-1010	82	82
TJ-AG-1010 - 1	TJ-AT-1010 - 1	100 X 100 X 100	80 + 20	TJ-1010P	TJ-1010	82	82
TJ-AG-1022	TJ-AT-1022	100 X 224 X 75	60 + 15	-	TJ-1022	76	198
TJ-AG-1018	TJ-AT-1018	100 X 180 X 75	60 + 15	-	TJ-1018	76	155
TJ-AG-1118	TJ-AT-1118	113 X 183 X 90	70 + 20	TJ-1118P	TJ-1118	95	165
TJ-AG-1118 - 1	TJ-AT-1118 - 1	113 X 183 X 105	70 + 35	TJ-1118P	TJ-1118	95	165
TJ-AG-1216	TJ-AT-1216	120 X 160 X 90	70 + 20	-	TJ-1216	102	142
TJ-AG-1220	TJ-AT-1220	120 X 200 X 75	55 + 20	TJ-1220P	TJ-1220	102	182
TJ-AG-1222	TJ-AT-1222	120 X 220 X 85	67 + 20	TJ-1222P	TJ-1222	100	200
TJ-AG-1212 - S	TJ-AT-1212 - S	125 X 125 X 75	55 + 20	TJ-1212P	TJ-1212	105	105
TJ-AG-1212	TJ-AT-1212	125 X 125 X 100	80 + 20	TJ-1212P	TJ-1212	105	105
TJ-AG-1217	TJ-AT-1217	125 X 175 X 75	50 + 25	TJ-1217P	TJ-1217	109	156
TJ-AG-1217 - 1	TJ-AT-1217 - 1	125 X 175 X 100	50 + 50	TJ-1217P	TJ-1217	109	156
TJ-AG-1217 - 2	TJ-AT-1217 - 2	125 X 175 X 110	85 + 25	TJ-1217P	TJ-1217	109	156
TJ-AG-1217 - 3	TJ-AT-1217 - 3	125 X 175 X 135	85 + 50	TJ-1217P	TJ-1217	109	156
TJ-AG-1417	TJ-AT-1417	140 X 170 X 95	75 + 20	TJ-1417P	TJ-1417	122	152
TJ-AG-1423	TJ-AT-1423	140 X 230 X 95	75 + 20	TJ-1423P	TJ-1423	122	212
TJ-AG-1520 - S	TJ-AT-1520 - S	150 X 200 X 75	55 + 20	TJ-1520P	TJ-1520	132	182
TJ-AG-1520	TJ-AT-1520	150 X 200 X 100	80 + 20	TJ-1520P	TJ-1520	132	182
TJ-AG-1520 - 1	TJ-AT-1520 - 1	150 X 200 X 130	80 + 50	TJ-1520P	TJ-1520	132	182
TJ-AG-1520 - 2	TJ-AT-1520 - 2	150 X 200 X 130	110 + 20	TJ-1520P	TJ-1520	132	182
TJ-AG-1520 - 3	TJ-AT-1520 - 3	150 X 200 X 160	110 + 50	TJ-1520P	TJ-1520	132	182
TJ-AG-1525	TJ-AT-1525	150 X 250 X 100	80 + 20	TJ-1525P	TJ-1525	132	232
TJ-AG-1525 - 1	TJ-AT-1525 - 1	150 X 250 X 130	80 + 50	TJ-1525P	TJ-1525	132	232
TJ-AG-1525 - 2	TJ-AT-1525 - 2	150 X 250 X 130	110 + 20	TJ-1525P	TJ-1525	132	232
TJ-AG-1525 - 3	TJ-AT-1525 - 3	150 X 250 X 160	110 + 50	TJ-1525P	TJ-1525	132	232
TJ-AG-1717	TJ-AT-1717	175 X 175 X 75	50 + 25	TJ-1717P	TJ-1717	156	157
TJ-AG-1717 - 1	TJ-AT-1717 - 1	175 X 175 X 100	50 + 50	TJ-1717P	TJ-1717	156	157
TJ-AG-1717 - 2	TJ-AT-1717 - 2	175 X 175 X 125	100 + 25	TJ-1717P	TJ-1717	156	157
TJ-AG-1717 - 3	TJ-AT-1717 - 3	175 X 175 X 150	100 + 50	TJ-1717P	TJ-1717	156	157
TJ-AG-1725	TJ-AT-1725	175 X 250 X 75	50 + 25	TJ-1725P	TJ-1725	156	232
TJ-AG-1725 - 1	TJ-AT-1725 - 1	175 X 250 X 100	50 + 50	TJ-1725P	TJ-1725	156	232
TJ-AG-1825	TJ-AT-1825	180 X 255 X 100	85 + 15	-	TJ-1825	162	236
TJ-AG-2020 - S	TJ-AT-2020 - S	200 X 200 X 95	75 + 20	TJ-2020P	TJ-2020	182	182
TJ-AG-2020 - 1	TJ-AT-2020 - 1	200 X 200 X 125	75 + 50	TJ-2020P	TJ-2020	182	182
TJ-AG-2020	TJ-AT-2020	200 X 200 X 130	110 + 20	TJ-2020P	TJ-2020	182	182
TJ-AG-2020 - 2	TJ-AT-2020 - 2	200 X 200 X 160	110 + 20	TJ-2020P	TJ-2020	182	182
TJ-AG-2025	TJ-AT-2025	200 X 250 X 100	75 + 25	TJ-2025P	TJ-2025	178	228
TJ-AG-2030	TJ-AT-2030	200 X 300 X 105	85 + 50	TJ-2030P	TJ-2030	180	280



PLASTIC ENCLOSURE

Plastic Enclosure - Plastic screw - TJ series - Grey Door & Clear Door

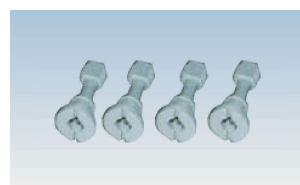
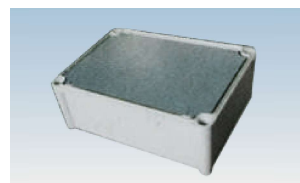
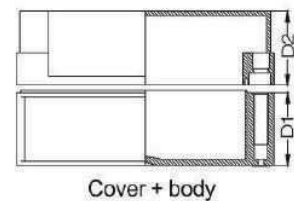
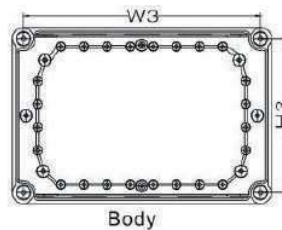
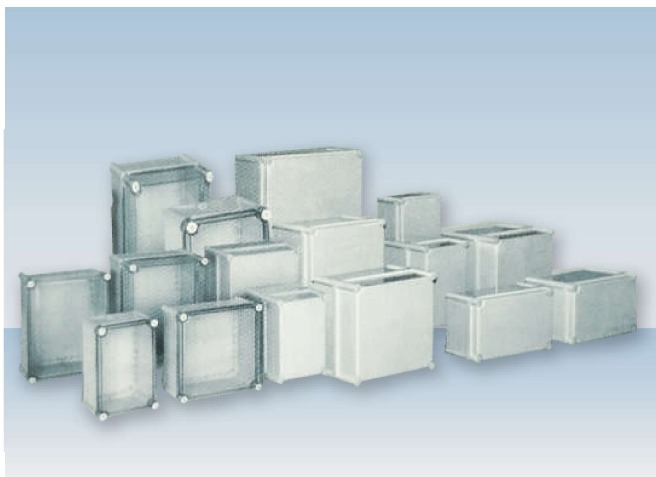
AIBOX non-metallic enclosures are corrosion proof and can use for many applications where non-metallic enclosures are required

Weight of non-metallic enclosures is 25% of the weight of steel enclosures and can use for similar applications where non-metallic enclosures are preferred. Non-metallic enclosures are having good insulation properties and light weight and give advantages over steel enclosures in some applications.

Plastic Enclosure - Plastic screw - TJ series - Grey Door & Clear Door comes with plastic screws and available in grey solid door or transparent door

Temperature range : -40°C to 120°C
 ABS : Acrulonitrile Butadiene styrene
 PC: Poly Carbonate

Screw Type		Dimension (mm)		Mounting Plate		Installation size (mm)	
Grey door	Clear door	W X H X XD	D1 + D2	Plastic	Metal	W3	H3
TJ-AG-2819	TJ-AT-2819	280 X 190 X 130	98 + 32	TJ-2819P	TJ-2819	255	165
TJ-AG-2819 - 1	TJ-AT-2819 - 1	280 X 190 X 180	98 + 82	TJ-2819P	TJ-2819	255	165
TJ-AG-2819 - 2	TJ-AT-2819 - 2	280 X 190 X 180	148 + 32	TJ-2819P	TJ-2819	255	165
TJ-AG-2819 - 3	TJ-AT-2819 - 3	280 X 190 X 230	148 + 82	TJ-2819P	TJ-2819	255	165
TJ-AG-2828	TJ-AT-2828	280 X 280 X 130	98 + 32	TJ-2828P	TJ-2828	255	255
TJ-AG-2828 - 1	TJ-AT-2828 - 1	280 X 280 X 180	98 + 81	TJ-2828P	TJ-2828	255	255
TJ-AG-2828 - 2	TJ-AT-2828 - 2	280 X 280 X 180	148 + 32	TJ-2828P	TJ-2828	255	255
TJ-AG-2828 - 3	TJ-AT-2828 - 3	280 X 280 X 230	148 + 81	TJ-2828P	TJ-2828	255	255
TJ-AG-3428	TJ-AT-3428	340 X 280 X 130	98 + 32	TJ-3428P	TJ-3428	315	255
TJ-AG-3428 - 1	TJ-AT-3428 - 1	340 X 280 X 180	98 + 81	TJ-3428P	TJ-3428	355	355
TJ-AG-3819- S	TJ-AT-3819- S	380 X 190 X 100	69+ 30	TJ-3819P	TJ-3819	355	165
TJ-AG-3819	TJ-AT-3819	380 X 190 X 130	98 + 30	TJ-3819P	TJ-3819	355	165
TJ-AG-3819 - 1	TJ-AT-3819 - 1	380 X 190 X 180	148 + 30	TJ-3819P	TJ-3819	355	165
TJ-AG-3828	TJ-AT-3828	380 X 280 X 130	98 + 32	TJ-3828P	TJ-3828	355	255
TJ-AG-3828 - 1	TJ-AT-3828 - 1	380 X 280 X 180	98 + 82	TJ-3828P	TJ-3828	355	255
TJ-AG-3828 - 2	TJ-AT-3828 - 2	380 X 280 X 180	148 + 32	TJ-3828P	TJ-3828	355	255
TJ-AG-3828 - 3	TJ-AT-3828 - 3	380 X 280 X 230	148 + 82	TJ-3828P	TJ-3828	355	255
TJ-AG-2856	TJ-AT-2856	280 X 560X 130	98 + 32	TJ-2828P x 2	TJ-2856	540	255
TJ-AG-3856	TJ-AT-3856	380 X 560X 180	148 + 32	TJ-3828P x 2	TJ-3856	534	354



PLASTIC ENCLOSURE

Plastic Enclosure - Plastic screw - TJ series - Grey Door

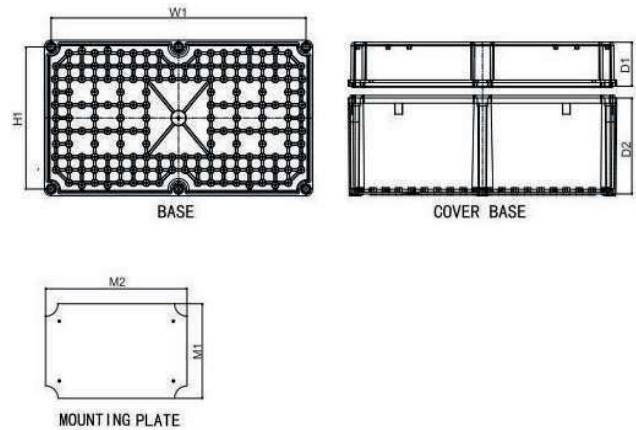
AIBOX non-metallic enclosures are corrosion proof and can use for many applications where non-metallic enclosures are required

Weight of non-metallic enclosures is 25% of the weight of steel enclosures and can use for similar applications where non-metallic enclosures are preferred. Non-metallic enclosures are having good insulation properties and light weight and give advantages over steel enclosures in some applications.

Plastic Enclosure - Plastic screw - TJ series - Grey Door comes with plastic screws and available in grey solid door

High strength ABS material give better robust in usage

Screw Type	Size (mm)	Dimension (mm)				Plate Model	Plate size	
		W1	H1	D1	D2		M1	M2
Grey door	W X H X XD							
TJ-AG-2234	220 X 340 X 145	314	194	40	105	TJ-2234	198	318
TJ-AG-2730	270 X 300 X 145	274	244	40	105	TJ-2730	245	275
TJ-AG-3040	300 X 400 X 160	374	274	55	105	TJ-3040	275	375
TJ-AG-2746	270 X 460 X 160	434	244	55	105	TJ-2746	245	435
TJ-AG-3052	300 X 520 X 160	494	274	55	105	TJ-3052	275	495
TJ-AG-3654	360 X 540 X 180	514	334	55	125	TJ-3654	333	513

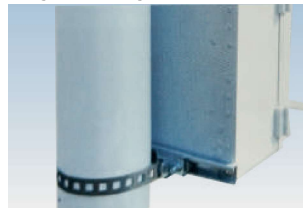


Accessories

Inside hinge



Upright post fixing



Installing rail



Wall mount bracket



PLASTIC ENCLOSURE

Plastic Enclosure - Plastic screw - TB series - Grey Door & Clear Door

AIBOX non-metallic enclosures are corrosion proof and can use for many applications where non-metallic enclosures are required

Weight of non-metallic enclosures is 25% of the weight of steel enclosures and can use for similar applications where non-metallic enclosures are preferred. Non-metallic enclosures are having good insulation properties and light weight and give advantages over steel enclosures in some applications.

Plastic Enclosure - Plastic screw - TB series - Grey Door & Clear Door comes with plastic screws and available in grey solid door or transparent door

The products prevent electromagnetic interference (EMI) and prevent substances of the static electricity,

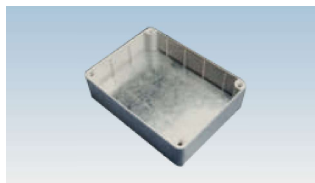
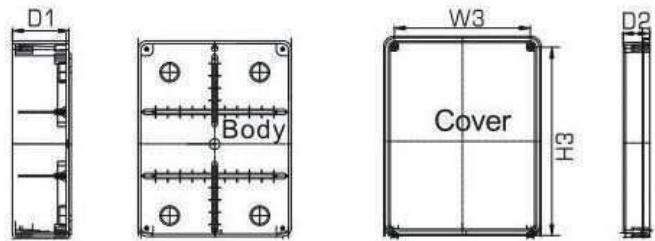
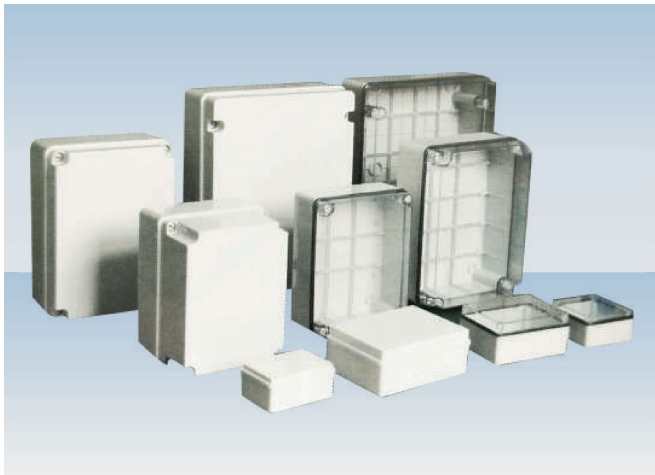
Temperature range : -40°C to 120°C

ABS : Acrylonitrile Butadiene styrene

PC: Poly Carbonate

Plastic Screw Type		Dimension (mm)		Mounting Plate	Installation size (mm)	
Grey door	Clear door	W X H X XD	D1 + D2	Metal	W3	H3
TB-AG-0711	TB-AT-0711	78 X 113 X 55	43 + 15	TJ-0711	73.5	108.5
TB-AG-0812	TB-AT-0812	80 X 120 X 54	43 + 15	TJ-0812	83	124
TB-AG-1010	TB-AT-1010	100 X 100 X 54	43 + 15	TJ-1010	104	104
TB-AG-1020	TB-AT-1020	100 X 200 X 70	57 + 15	TJ-1020	104.5	204
TB-AG-1115	TB-AT-1115	110 X 150 X 72	52 + 24	TJ-1115	113	153
TB-AG-1419	TB-AT-1419	140 X 190 X 76	54 + 25	TJ-1419	144	194
TB-AG-1515	TB-AT-1515	150 X 150 X 70	57 + 15	TJ-1515	154.5	154.5
TB-AG-1924	TB-AT-1924	190 X 240 X 95	70 + 28	TJ-1924	195	250
TB-AG-1924 - 1	TB-AT-1924 - 1	190 X 240 X 165	70 + 98	TJ-1924	195	250
TB-AG-2230	TB-AT-2230	220 X 300 X 125	79 + 50	TJ-2230	230	310
TB-AG-2230 - 1	TB-AT-2230 - 1	220 X 300 X 185	79 + 110	TJ-2230	220	300
TB-AG-3038	TB-AT-3038	300 X 380 X 125	78 + 50	TJ-3038	310	390
TB-AG-3038 - 1	TB-AT-3038 - 1	300 X 380 X 185	78 + 110	TJ-3038	310	390

Size TBAG0812-TBAG1115 metal screw



Metal mounting plate



Size TBAG1419-TBAG3038-1
Plastic screw



Cover open at 90 degree
Size TBAG1419-TBAG3038-1
Plastic screw



Wall bracket
Model: TB-05 for (TB-AG-1419)



Wall bracket
Model: TB-06
for (TB-AG-1924 -TB-AG-3038-1)



Wall bracket